



MARITIME



MARINA
PEDESTAL



S.O.S
FIRE CABINET



ELECTRICAL
VEHICLE



CARAVAN
PARK
SYSTEM



Safe energy for future

www.polestarpedestal.com





Marina System Operating Solutions	0.10 - 18
Pedestal Models	1.10 - 60
S.O.S & Fire Cabinets	2.10
Marina Equipments & Accessories	3.10 - 50
Electrical Vehicle Charging Stations	4.10 - 11
Caravan Park Systems	5.10 - 11
Stone & Marble Quarry Equipments	6.10

0.10 - 18

1.10 - 60

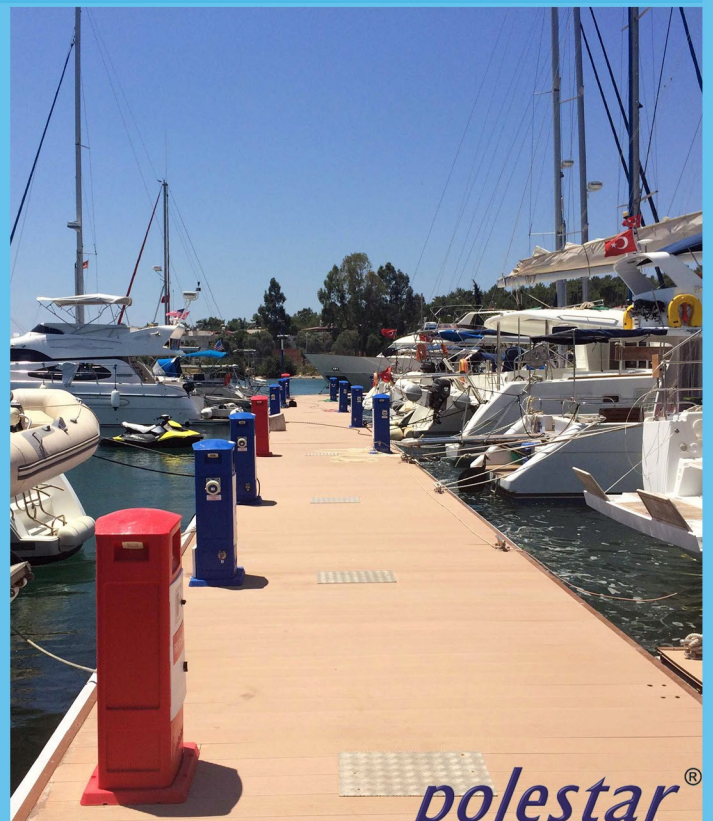
2.10

3.10 - 50

4.10 - 11

5.10 - 11

6.10



polestar[®]

STANDARD METERLESS PEDESTAL FEATURES

OUR FEATURED BODY MODELS

* IMAGES ARE FOR BODY MODEL SELECTION. ACCESSORIES ON THE PEDESTALS MAY VARY.



POWERS (A)

16
32
63
125
250
400
600

BODY MODEL : MEGA ATLAS
BODY CODE : MPMA0010



POWERS (A)

16
32
63
125
250
400

BODY MODEL : MEGA OCEAN
BODY CODE : MPOM0010



POWERS (A)

16
32
63
125
250

BODY MODEL : SMYRNA
BODY CODE : MPSY0010



POWERS (A)

16
32
63
125
250

BODY MODEL : ATLAS
BODY CODE : MPAT0010



POWERS (A)

16
32
63
125
250

BODY MODEL : OCEAN
BODY CODE : MPOC0010



POWERS (A)

16
32
63
125

BODY MODEL : 900
BODY CODE : MPDZ0010

ELECTRICAL SERVICE COMPONENTS ON STANDARD METERLESS PEDESTAL:

(APPLICABLE TO ALL MODELS FOR UP TO 250 A POWER OPTION)

- ✦ IP67 Tilted Electric Socket for Each Subscriber (Optional: Interlocked Socket)
- ✦ 30mA RCD (GFCI-Ground Fault Circuit Interrupter) for Each Subscriber
- ✦ Thermic Magnetic Circuit Breaker (MCB) for Each Subscriber
- ✦ 250A Copper Busbar R-S-T-N Polycarbonate Electric Terminal
- ✦ Depends on Its Model, 3 to 5 LED Lighting for Ground and Its Surroundings
- ✦ 1 x LED Driver
- ✦ 1 x MCB (LED Lighting)
- ✦ 316 (A4) Inox Connecting Bolts
- ✦ TV - SAT Socket (Optional)

WATER SERVICE COMPONENTS ON STANDARD METERLESS PEDESTAL: (APPLICABLE TO ALL MODELS)

- ✦ 1/2" Quarter Turn Water Faucet (Water Tap) for Each Subscriber
- ✦ Hose Adapter on Water Faucet for Each Subscriber
- ✦ Flange on Water Faucet for Each Subscriber
- ✦ 1/2" PPRC Water Filter
- ✦ Upto 90 Bar Resistant 3/4" Flexible Hose

CLASSIC WITH METER



BODY MODEL : MEGA OCEAN
BODY CODE : MPOM0010



BODY MODEL : 900
BODY CODE : MPDZ0010



BODY MODEL : ATLAS
BODY CODE : MPAT0010



BODY MODEL : OCEAN
BODY CODE : MPOC0010



BODY MODEL : 900
BODY CODE : MPDZ0010

* IMAGES ARE SAMPLE OF OUR PEDESTALS. ACCESSORIES ON THE PEDESTALS MAY VARY.

CLASSIC METERED PEDESTAL OPERATING FEATURES:

- Classic Metered Pedestal Can Be Applied to All Our Body Models
- The Subscriber's KW and Liter Meter Consumptions Can Be Followed and Read Personally from The Related Service Meters from Each Pedestal

ADDITIONAL COMPONENTS ON STANDARD METERLESS PEDESTAL:

- Electronic Electricity Meter with Marine-Lac Paint for Each Subscriber
- Digital Pulsed Water Flowmeter for Each Subscriber

PRE-PAID SYSTEM

Marina Operating Solution



POLESTAR PRE-PAID MODULE (HDPP0010)

POLESTAR PRE-PAID MODULE (HDPP0010) OPERATING FEATURES:

- ✦ Polestar Pre-Paid Module Can Be Applied to All Our Body Models but Atlas Model with Polestar Marina Operating System Solution
- ✦ Wireless Remote Smart Access on Each Pedestal (Optional)
- ✦ 3.5" LCD TFT Graphical Green Display with Control upto 4 Subscriber on Each Pedestal (Depends on The Power Options)
- ✦ Sun Visor on Each Polestar Pre-Paid Module
- ✦ The English Language Interface Will Be Used by Subscribers
- ✦ The Pedestal Power Choices Can Be Assigned for Each Subscriber
- ✦ The Subscriber's Credit Can Be Uploaded and Refunded with Polestar RFID Transponder Cards on Corresponding Electricity and Water Areas on the Module
- ✦ KW and Liter Consumption Can Be Followed from The Display by The Subscriber from Each Pedestal
- ✦ On The Module's Display The Subscriber May See Flashing Warning on the Related Service When Their Credit Goes Below 10 Currency Unit
- ✦ The Electricity and Water Services Can Be Turned Off Automatically When The Credits End
- ✦ The Pedestal Malfunctions Can Be Notified Automatically to Marina Office (Optional)

LIST OF OUR PRODUCTS INCLUDED IN THE PRE-PAID SYSTEM:

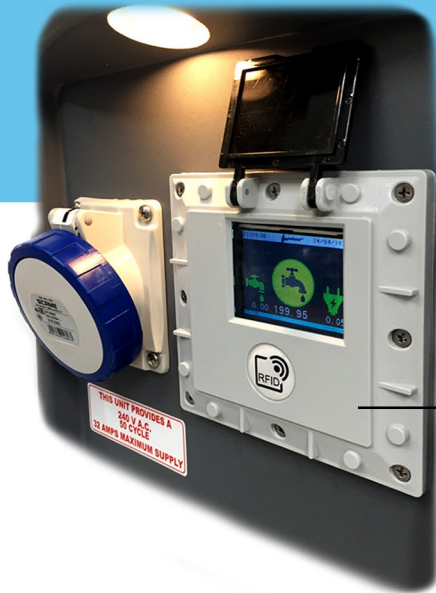
- ✦ Simple and User Friendly Polestar Marina Operating Software Will Be Used from the Marina Office
- ✦ A Polestar Transponder Reader Writer (MERW0010) Will Be Used with Polestar Operating Software for Uploading the Credits or Refund Processes to the Customers
- ✦ Polestar RFID Transponder Cards / Keys (MERT0010/20/30) for Using Electricity and Water Services from Marina Pedestals

ADDITIONAL COMPONENTS ON STANDARD METERLESS PEDESTAL:

- ✦ 1 x Polestar Pre-Paid Module (HDPP0010)
- ✦ 1 x Power Card for Supplying upto 4 Subscribers
- ✦ Electronic Electricity Meter with Marine-Lac Paint for Each Subscriber
- ✦ Contactor for Each Subscriber
- ✦ Digital Pulsed Water Flowmeter for Each Subscriber
- ✦ Servo DC Valve for Each Subscriber

SMART ACCESS & PRE-PAID SYSTEM

Marina Operating Solution



POLESTAR SMART ACCESS MODULE (HDSA0010)

POLESTAR SMART ACCESS MODULE (HDSA0010) OPERATING FEATURES:

- ✦ Polestar Smart Access Module Can Be Applied to All Our Body Models with Polestar Marina Operating System Solution
- ✦ Both Pre-Paid and Smart Features Can Be Operated Simultaneously or Separately
- ✦ Wireless Remote Smart Access and Pre-Paid Payment on Each Pedestal
- ✦ 2.8" LCD TFT Color Display for Each Subscriber (Depends on The Power Options)
- ✦ Sun Visor on Each Polestar Smart Access Module
- ✦ The Subscriber Specific Language Can Be Assigned as English, Turkish, Italian or German
- ✦ The Subscriber's Credit Can Be Uploaded and Refunded by Remotely
- ✦ The Power and Water Services Can Be Turned On and Off by Remotely
- ✦ KW and Liter Meter Consumptions Can Be Reported on Vessel, Pedestal or Pontoon Bases
- ✦ The Pedestal Power Choices Can Be Assigned for Each Subscriber
- ✦ The Subscriber May Receive an Information Message on Their Display When Their Credit Goes Below 10 Currency Unit
- ✦ Each Subscriber May Send Either Private or Mass Message on Their Displays
- ✦ The Pedestal Malfunctions Can Be Notified Automatically to Marina Office
- ✦ The Reservation of the Subscriber Can Be Made Remotely
- ✦ Automated Message Can Be Sent to the GSM Number of the Customer (Optional)

LIST OF OUR PRODUCTS INCLUDED IN THE SMART ACCESS & PRE-PAID SYSTEM:

- ✦ Simple and User Friendly Polestar Marina Operating Software Will Be Used from the Marina Office
- ✦ A Polestar Transponder Reader Writer (MERW0010) Will Be Used with Polestar Operating Software for Uploading the Credits or Refund Processes to the Customers
- ✦ Polestar RFID Transponder Cards / Keys (MERT0010/20/30) for Using Electricity and Water Services from Marina Pedestals

ADDITIONAL COMPONENTS ON STANDARD METERLESS PEDESTAL:

- ✦ 1 x Polestar Smart Access Module (HDSA0010)
- ✦ Power Card for Supplying Each Subscriber
- ✦ 1 x 8-Port Fast Ethernet Switch for Each Pedestal
- ✦ Electronic Electricity Meter with Marine-Lac Paint for Each Subscriber
- ✦ Contactor for Each Subscriber
- ✦ Digital Pulsed Water Flowmeter for Each Subscriber
- ✦ Servo DC Valve for Each Subscriber

REVISION:		PAGE NO:	
PROJECT:		PAGE SIZE:	A4
DATE:			
PRODUCT CODE:			
PRODUCT MODEL:			

POLESTAR SMART ACCESS AND PREPAID SYSTEM SAMPLE OPERATING DIAGRAM FOR MARINAS

FIBER OPTIC CABLE (depends on the distance to the office)

MARINA OFFICE

POLESTAR SOFTWARE
OS: Windows 7 or Above
TCP/IP
100Mbps/s
Database: MS SQL Server Express/Standard Edition
Server: Windows 2008 Server or Above

RFID Transponder Reader Writer ↔ Polestar RFID Transponder

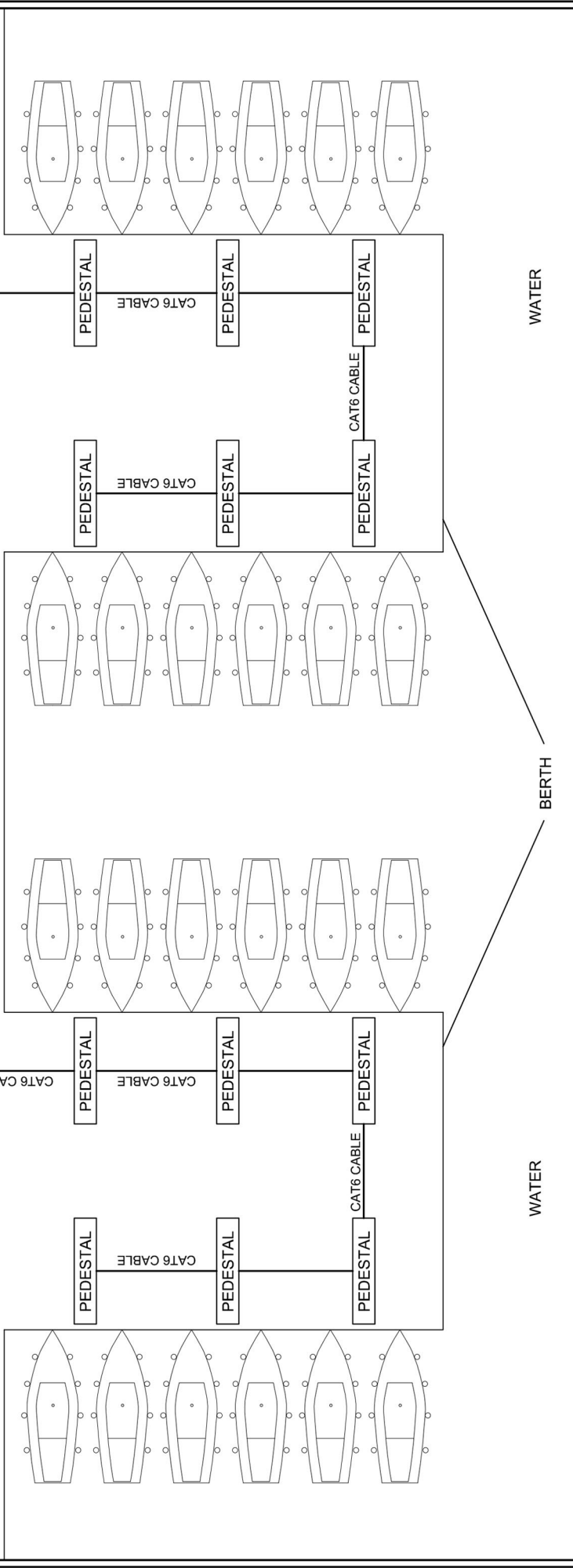
MARINA KIOSK (Optional)

Polestar Software
24 hrs. Accessibility

Accepts Cash or Credit Card (POS) NO REFUND ↔ Polestar RFID Transponder Reader Writer

Cash or Credit Card ↔ Polestar RFID Transponder

SERVER BOX (ROUTER / F.O. BOX)





**SMART
MPAT0014**



**METERLESS
MPAT0011**



TYPE

PRODUCT CODE

- METERLESS : MPAT0011
- CLASSIC METERED : MPAT0012
- PRE-PAID : MPAT0013
- SMART & PRE-PAID : MPAT0014

- BODY : LDPE, UV Protective
- DIMENSIONS : 540 x 320 x 1260 (mm)
- POWER OPTIONS : 16 - 32 - 63 - 125 - 250 A

BODY FEATURES:

- ✦ Water and Electrical Components are Internally Segregated and Combined on the Pedestal
- ✦ Water Tight IP68 Lockable Hinged Access Windows for Switchgears
- ✦ 5 x LED Lighting on 3 Sides for Ground and its Surroundings

* SOCKETS, ELECTRONIC COMPONENTS AND WATER SYSTEM ON THE IMAGES MAY VARY



<u>TYPE</u>	<u>PRODUCT CODE</u>
-------------	---------------------

METERLESS	: MPMA0011
CLASSIC METERED	: MPMA0012
PRE-PAID	: MPMA0013
SMART & PRE-PAID	: MPMA0014

BODY	: LDPE, UV Protective
DIMENSIONS	: 1015 x 600 x 1300 (mm)
POWER OPTIONS	: 250 - 400 - 600 A

BODY FEATURES:

- ✦ Water and Electrical Components are Internally Segregated and Combined on the Pedestal
- ✦ IP66 Double Keylocked Openable Front Panel Cover
- ✦ Front Panel Color Options Different From Its Body
- ✦ 4 x LED Lighting on 3 Sides for Ground and its Surroundings

* SOCKETS, ELECTRONIC COMPONENTS AND WATER SYSTEM ON THE IMAGES MAY VARY



**SMART
MPOC0014**



**PRE-PAID
MPOC0013**



**250 A
CLASSIC METERED
MPOC0012**

TYPE PRODUCT CODE

METERLESS	: MPOC0011
CLASSIC METERED	: MPOC0012
PRE-PAID	: MPOC0013
SMART & PRE-PAID	: MPOC0014

BODY	: LDPE, UV Protective
DIMENSIONS	: 410 x 280 x 1080 (mm)
POWER OPTIONS	: 16 - 32 - 63 - 125 - 250 A

BODY FEATURES:

- ✦ Double Keylocked IP66 Openable Front Panel Cover
- ✦ Front Panel Color Options Different From Its Body
- ✦ 3 x LED Lighting on 3 Sides for Ground and its Surroundings

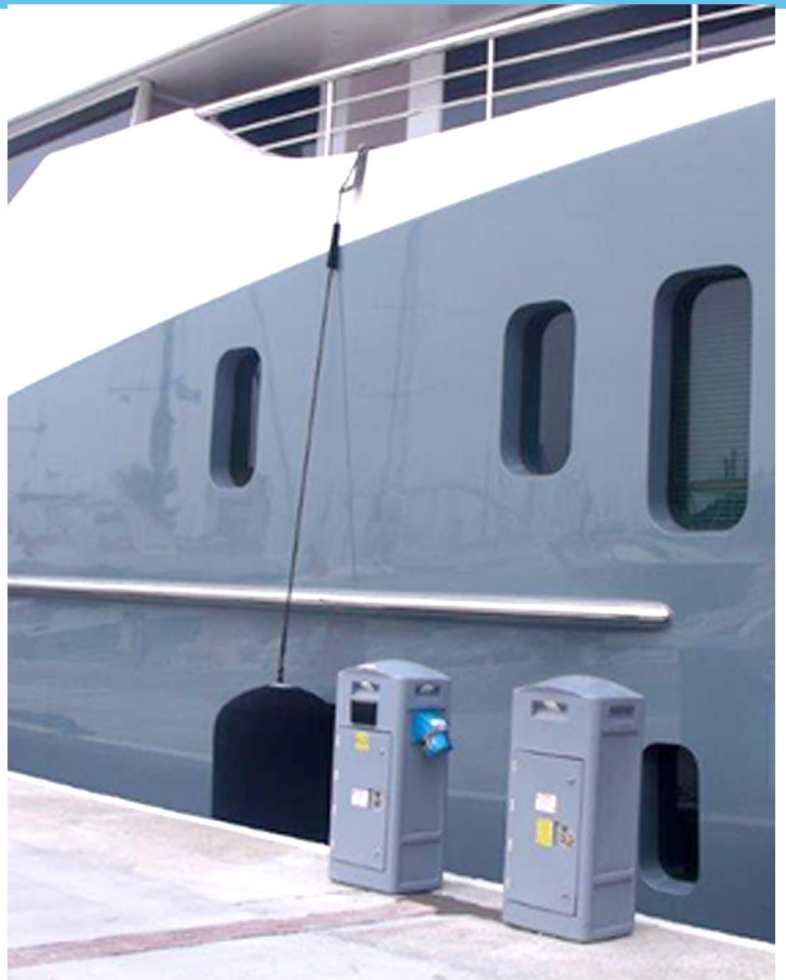
* SOCKETS, ELECTRONIC COMPONENTS AND WATER SYSTEM ON THE IMAGES MAY VARY



**METERLESS
MPOM0011**



**CLASSIC METERED
MPOM0012**



TYPE

PRODUCT CODE

METERLESS	: MPOM0011
CLASSIC METERED	: MPOM0012
PRE-PAID	: MPOM0013
SMART & PRE-PAID	: MPOM0014

BODY	: LDPE, UV Protective
DIMENSIONS	: 580 x 400 x 1250 (mm)
POWER OPTIONS	: 16 - 32 - 63 - 125 - 250 - 400A

BODY FEATURES:

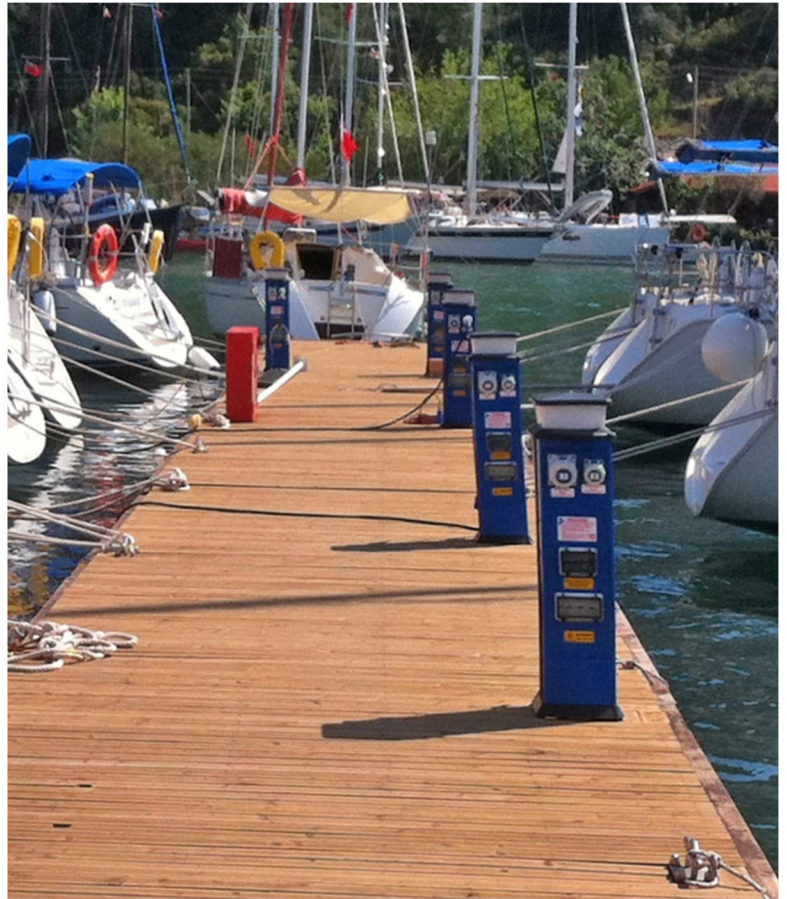
- ✦ **Stainless Steel T-Handle Latch Usable with Padlock**
- ✦ **IP66 Openable Front Panel Cover with Additional Double Latch**
- ✦ **Front Panel Color Options Different From Its Body**
- ✦ **3 x LED Lighting on 3 Sides for Ground and its Surroundings**



* SOCKETS, ELECTRONIC COMPONENTS AND WATER SYSTEM ON THE IMAGES MAY VARY



**METERLESS
PDZ0011**



**METERLESS
PDZ0011**

TYPE PRODUCT CODE

METERLESS	: MPDZ0011
CLASSIC METERED	: MPDZ0012
PRE-PAID	: MPDZ0013
SMART & PRE-PAID	: MPDZ0014

OUTER BODY	: PP, UV Protective
INNER BODY	: Polyamide 6 with Reinforced Fibre Glass
DIMENSIONS	: 270 x 260 x 1070 (mm)
POWER OPTIONS	: 16 - 32 - 63 - 125 A

BODY FEATURES:

- ✈ Water Tight IP68 Lockable Hinged Access Windows for Switchgears
- ✈ Peripheral LED Lighting for Ground and its Surroundings

* SOCKETS, ELECTRONIC COMPONENTS AND WATER SYSTEM ON THE IMAGES MAY VARY

S.O.S - FIRE PEDESTALS



MODEL : OCEAN
BODY CODE : FCOC0010



MODEL : ATLAS
BODY CODE : FCAT0010

FIRE CABINET FEATURES:

- ★ LDPE UV Protective Body
- ★ Choices of Red or White Body Colors
- ★ LED Lighting (Warmlight or Red)
- ★ MCB and Driver for LED Lighting
- ★ 304 Quality Chrome Hose Hanger
- ★ Ocean, Mega Ocean and Smyrna Models Have Max. 30 mt. Long Hose Capacity
- ★ Atlas Model Has Max. 20 mt. Long Hose Capacity
- ★ Fire Hose and Its Accessories are Optional
- ★ Life Buoy and Its Chrome Hanger are Optional
- ★ First Aid Kit is Optional



MODEL : MEGA OCEAN
BODY CODE : FCOM0010



MODEL : SMYRNA
BODY CODE : FCSY0010



MARINA KIOSK

FOR
SMART ACCESS & PREPAID SYSTEMS



MARINA KIOSK

PRODUCT CODE: HDMK0010

DIMENSIONS: 1600 x 570 x 475 (mm)

MARINA PAYMENT KIOSK FEATURES:

- ✦ Works Both with Smart Access & Pre-Paid Systems
- ✦ Linux Based Embedded Computer
- ✦ Polestar Software
- ✦ English Language Interface
- ✦ 17" Touch Screen Monitor
- ✦ On-screen Keyboard
- ✦ Ethernet Port
- ✦ Stereo Speakers
- ✦ Banknotes Validator: Accepts Cash
- ✦ Credit Card Reader (POS)
- ✦ Automatic Card Dispenser: Delivers Spare Polestar RFID Transponder Card to the customer
- ✦ Mifare (RFID) Reader/Writer: Reads and Uploads Credit to the Polestar RFID Transponder Card
- ✦ 80mm Thermal Paper Printer for Receipt
- ✦ 1 x LED Lighting and Driver
- ✦ Secure Sheet Metal Body
- ✦ Electrostatic Paint
- ✦ Wi-Fi Adapter (Optional)

SERVER BOX ROUTER / F.O. BOX



BODY : LDPE UV Protected
DIMENSIONS : 685 x 580 x 1140 (mm)

BODY COLOR OPTIONS - PRODUCT CODE

Gray - MESB0010
Green - MESB0020
Navy Blue - MESB0030

FEATURES:

- ✦ 1 x Thermostat Controlled Fan
- ✦ 2 x Vents w/ Filter on Both Sides
- ✦ 316 Inox Inner Framework
- ✦ 1 x RCBO Breaker
- ✦ 6 Way Extension Socket

LED LIGHTING SYSTEMS



LED COLOR VARIETIES

WARMLIGHT (MELL0010)

WHITE (MELL0020)

RED (MELL0030)

BLUE (MELL0040)

GREEN (MELL0050)



POLESTAR DESIGN LED LIGHTING

PRODUCT CODE: MELD0010

-  **Outdoor Usage**
-  **Weatherproof and Impact Proof Lighting Body**
-  **Deck Lighting / Wall Facade Lighting**

* All LED Lightings comes with its LED Driver and MCB


* All Color Varieties of LED Lights Can Be Used in All Applicable Products

RFID TRANSPONDER CARDS & KEYCHAINS



 **Polestar Floating RFID
Transponder Key**
PRODUCT CODE: MERT0010



 **Polestar RFID Transponder
Key Chain**
PRODUCT CODE: MERT0020



 **Polestar Floating RFID
Transponder Key Chain**
PRODUCT CODE: MERT0030




 **Polestar RFID Transponder
Reader Writer**
PRODUCT CODE: MERW0010


* Polestar RFID Transponders and Its RFID Transponder Reader Writer are Used with the Polestar Software for Marina Operating System Solutions

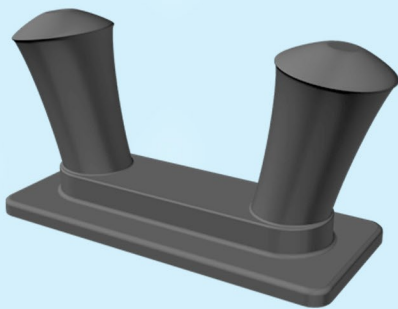
CLEATS & BOLLARDS



 **PRODUCT CODE** : MECB0010 - MECB0011
BODY : 3G50 Cast - 316 Chrome
TONNAGE : 35 ton - 45 ton
HULL LENGHT : 15 - 40 mt - 30 - 70 mt
DIMENSIONS : 200 x 200 x 190 (mm)



 **PRODUCT CODE** : MECB0021
BODY : 316 Chrome
TONNAGE : 15 ton
HULL LENGHT : 8 - 25 mt
DIMENSIONS : 100 x 300 x 100 (mm)



 **PRODUCT CODE** : MECB0030 - MECB0031
BODY : 3G50 Cast - 316 Chrome



 **PRODUCT CODE** : MECB0040 - MECB0041
BODY : 3G50 Cast - 316 Chrome

ELECTRIC VEHICLE CHARGING STATION

poles^tare^v



BODY MODEL : ATLAS
PRODUCT CODE : EVAT0010 (MODE 1)
 EVAT0020 (MODE 2)
 EVAT0030 (MODE 3)
BODY : LDPE UV Protective
DIMENSIONS : 540 x 320 x 1260 (mm)
POWER OPTIONS : 16 - 32 - 63 A
 Tilted Socket IP55
 (Optional: Interlocked Socket)

E Car
 carcharging systems



Charging Mode	Communication	Interlocking	Single-Phase	Three-Phase
Mode1	None	In The Vehicle	Max. 16A 3.7kW	Max. 16A 11.0kW
Mode2	PWM Module In The Charging Calble	In The Vehicle	Max. 32A 7.4kW	Max. 32A 22.0kW
Mode3	PWM Module In The Charging Station	In The Vehicle and In The Charging Socket	Max. 63A 14.5kW	Max. 63A 43.5kW

ELECTRIC VEHICLE CHARGING STATION

(CITY VERSION)

*polestar*ev



BODY MODEL : ATLAS
PRODUCT CODE : EVAT0110
BODY : LDPE UV Protective
DIMENSIONS : 540 x 320 x 1260 (mm)
POWER : 16 A
SCHUKO Socket IP44



BODY MODEL : OCEAN
PRODUCT CODE : EVOC0110
BODY : LDPE UV Protective
DIMENSIONS : 410 x 280 x 1080 (mm)
POWER : 16 A
SCHUKO Socket IP44



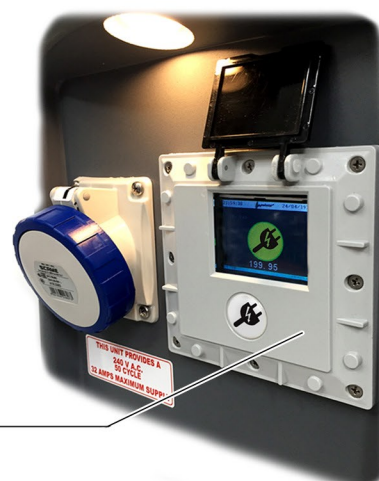
E Car
carcharging systems

CARAVAN PARK SYSTEM

SERVICE PEDESTAL



polestar
caravan
park systems



POLESTAR SMART ACCESS MODULE (HDSA0510)



MODEL BODY	: ATLAS
PRODUCT CODE	: CPAT0010
PEDESTAL BODY	: LDPE, UV Protective
DIMENSIONS	: 540 x 320 x 1260 (mm)
POWER OPTIONS	: 16 - 32 A
	Tilted Socket IP67
	(Optional: Interlocked Socket)

- ★ Each Service has 2.8" LCD TFT Color Display for the Subscriber
- ★ Smart and Pre-Paid Electronic System for Each Subscriber
- ★ Remote Smart Access and Cash Coin Payment for Each Subscriber
- ★ 30mA RCD (GFCI-Ground Fault Circuit Interrupter) for Each Subscriber
- ★ Thermic Magnetic Circuit Breaker (MCB) for Each Subscriber
- ★ Electronic Electricity Meter with Marine-Lac Paint for Each Subscriber
- ★ Contactor for Each Subscriber
- ★ 5 x LED Lighting on 3 Sides for Ground and Its Surroundings
- ★ 316 (A4) Inox Connecting Bolts
- ★ 1/2" Quarter Turn Water Faucet (Water Tap) for Each Subscriber (Optional: Heated Cable Coiling on pipes for Anti Freezing)
- ★ Hose Adapter on Water Faucet for Each Subscriber
- ★ Flange on Water Faucet for Each Subscriber
- ★ 1/2" PPRC Water Filter on Each Pedestal
- ★ Digital Pulsed Water Flowmeter for Each Subscriber
- ★ Servo DC Valve for Each Subscriber
- ★ Upto 90 Bar Resistant 3/4" Flexible Hose
- ★ Optional: TV - SAT Socket

CARAVAN PARK SYSTEM

PAYMENT KIOSK



- ★ 5" LCD TFT Color Screen
- ★ Interface with Choices of 3 Languages
- ★ Keypad
- ★ Each Kiosk Controls Maximum 21 Subscriber
- ★ Polestar Software

★ Currency Coin Validator

★ Water Tight IP68 Switchgear Access Window

★ 3 x LED Lighting on Front
for Ground and Its Surroundings

PRODUCT CODE	: HDCK0010
KIOSK BODY	: 316 Chrome, Electrostatic Paint
DIMENSIONS	: 500 x 320 x 1760 (mm)
OPTIONAL UPGRADE	: Power Sockets on the Body 16 - 32 A Tilted Socket IP67 (Optional: Interlocked Socket)

DISTRIBUTION PANEL FOR STONE & MARBLE QUARRIES



PRODUCT CODE : QEOM0010
MODEL BODY : Mega Ocean
BODY : LDPE UV Protective
DIMENSIONS : 580 x 400 x 1250 (mm)
POWER OPTIONS : 16 - 32 - 63 - 125 - 250 - 400A
Tilted Socket IP67
(Optional: Interlocked Socket)

HEAVY DUTY CABLE CARRIER



PRODUCT CODE : QECC0210
BODY : LDPE UV Protective
DIMENSIONS : 680 x 680 x 870 (mm)